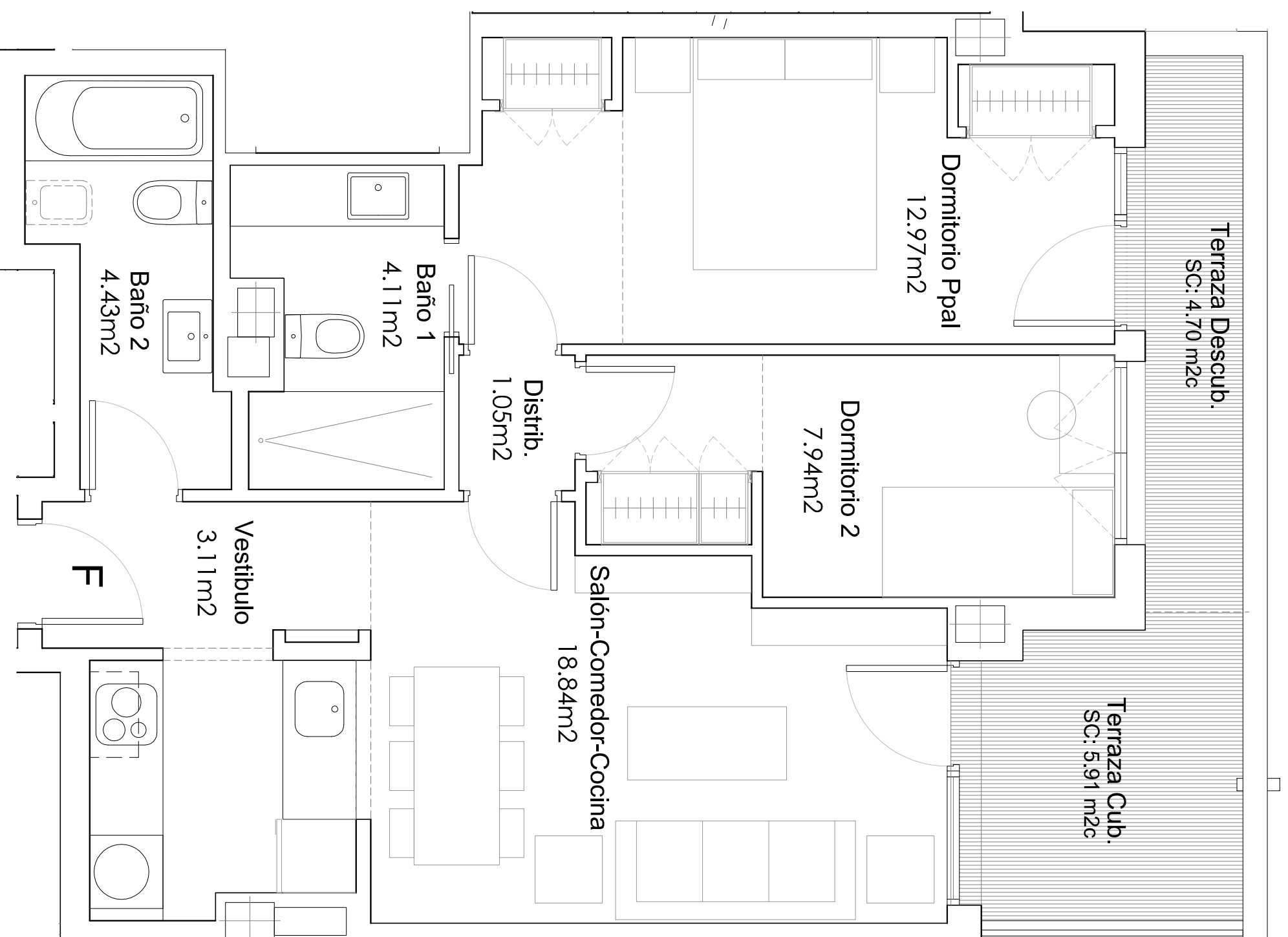
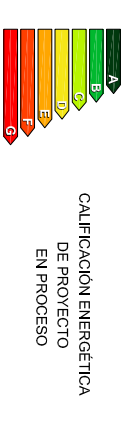
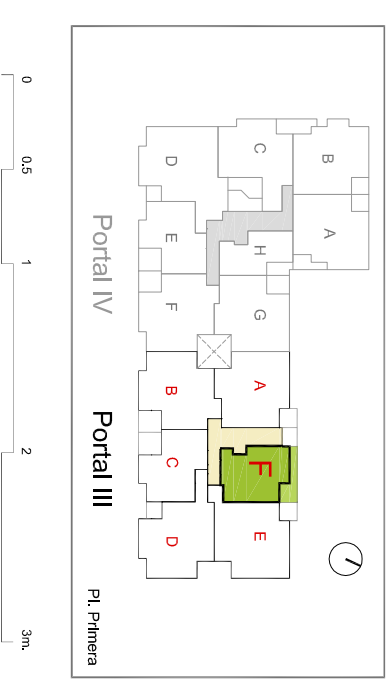


PORTAL III - 1ºF

	PORTAL IV								PORTAL III							
	A	B	C	D	E	F	G	H	A	B	C	D	E	F		
5º - Ático	3d	3d	3d	3d	1d				3d	3d	3d	3d	2d			
4º	3d	3d	3d	4d	2d	3d	3d	1d	3d	3d	3d	2d	3d	3d	2d	
3º	3d	3d	3d	4d	2d	3d	3d	1d	3d	3d	3d	2d	3d	3d	2d	
2º	3d	3d	3d	4d	2d	3d	3d	1d	3d	3d	3d	2d	3d	3d	2d	
1º	3d	3d	3d	4d	2d	3d	3d	1d	3d	3d	3d	2d	3d	3d	2d	
Baja	1d	3d							3d	1d	3d					

Sup. Útil Interior Vivienda	52.45 m ² u
Sup. Construida (Incl. pp/ ZZ.CC.)	73.60 m²c
Sup. Construida Exterior	10.61 m ² c

Superficies aproximadas.



Superficies según Decreto 218 / 2005

Sup. Útil Total	57.25 m ² u
Sup. Construida Total (Incl. pp/ ZZ.CC.)	73.00 m²c